

# FORGING ALLIANCES IN LUPUS

Lupus Roadshow 2020

Webinar Series

**23M** Blurring of Vision  
**SLE** Neurologic Involvement  
Prolonged Fever

5 December 2020 1-3PM



## NEVER-ENDING LUPUS CONUNDRUM

In what has been an exciting and informative first-of-its-kind lupus roadshow, this year's supposed series of lectures turned into a weekly webinar series spanning almost 3 months. And inching closer to the finale, the team prepared a 2-part discussion of two difficult and interesting cases aptly entitled "Never-ending Lupus Conundrum: 2 SLE patients presenting with prolonged fever and neurologic manifestations." The first part was presented last December 5, 2020 and is about a 23-year-old male SLE patient presenting with blurring of vision, neurologic involvement and prolonged fever. Dr. Rafael Vivar, a medical resident, presented the case in two parts. The first focused mainly on the patient's ocular symptoms and the second with his neurologic manifestations.



## Presenters

Case Presentation

Dr. Rafael Vivar

Virtual Lecture on  
Diagnosis & Treatment of  
Neuropsychiatric Lupus

Prof. Marcello Govoni

Key Learnings from the  
Lecture

Dr. Gerald Natanauan

## Faculty

Dr. Juan Javier Lichauco

Rheumatology

Dr. Carlo Ladores

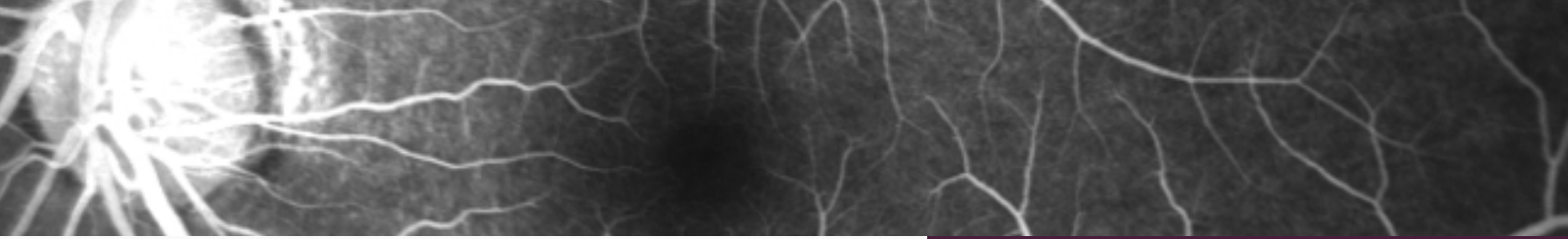
Ophthalmology

Dr. Meliza De Leon

Neurology

**Dr. Sheila Marie Reyes**  
**Dr. Sorrah Fiel Briones**

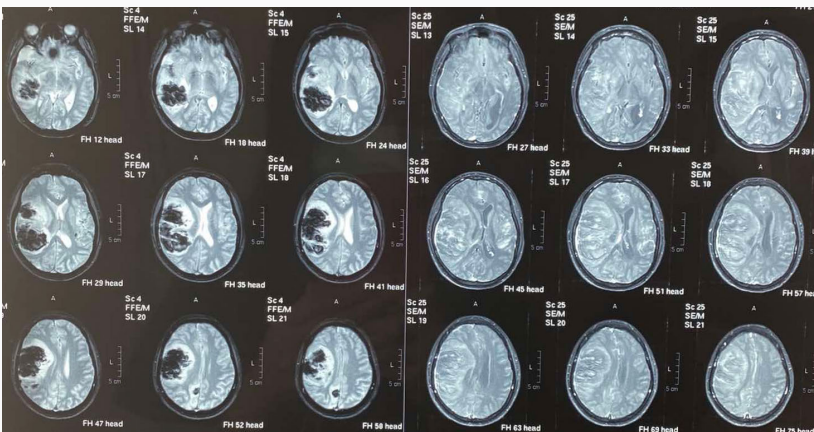
Session Chairpersons



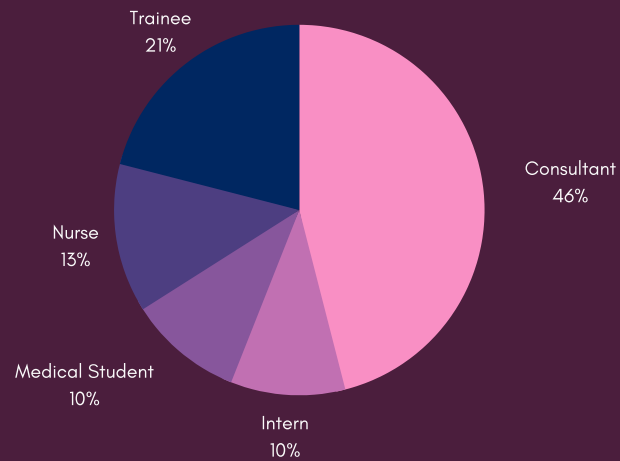
## Ocular Involvement

When a lupus patient presents with ocular symptoms, a number of differentials will come to mind. Are the symptoms secondary to the disease itself or is it because of prolonged exposure to the medications used to control the disease.

Forging an alliance with our colleagues from ophthalmology is of paramount importance because the management greatly differs. On one side is stopping the drug to prevent further toxicity and on the other side of the spectrum is increasing the dose of the drug to achieve optimal control of the disease activity. With this case, Dr. Carlo Ladres walked us through the ophthalmologic examinations and tests which can help pinpoint the culprit amongst the varied differentials.



Total number of attendees: 100



## Neurologic Involvement

Neuropsychiatric (NP) SLE is one of the most difficult aspects to diagnose and treat in lupus patients. The varied manifestations and possible etiologies present as a challenge to everyone involved in the patient's care. To offer his expertise on the topic, Prof. Marcello Govoni gave a virtual lecture on "Diagnosis and Treatment of Neuropsychiatric Lupus". After which Dr. Gerald Natanauan, one of the newest addition to the section's roster of rheumatologists, gave his commentary and reinforced the key learning points in the lecture. Afterwards, the brilliant neurology resident, Dr. Meliza De Leon gave a much needed refresher on the causes, manifestations and treatment of lupus patients with neurologic involvement.

## CLIFFHANGER

After the extensive discussion of the ocular and neurologic manifestations of the patient, the audience was left with a cliffhanger - the cause of the patient's prolonged fever and how it bridges us to the upcoming finale. Surely, the team has cooked up something big and exciting for the roadshow's climax.